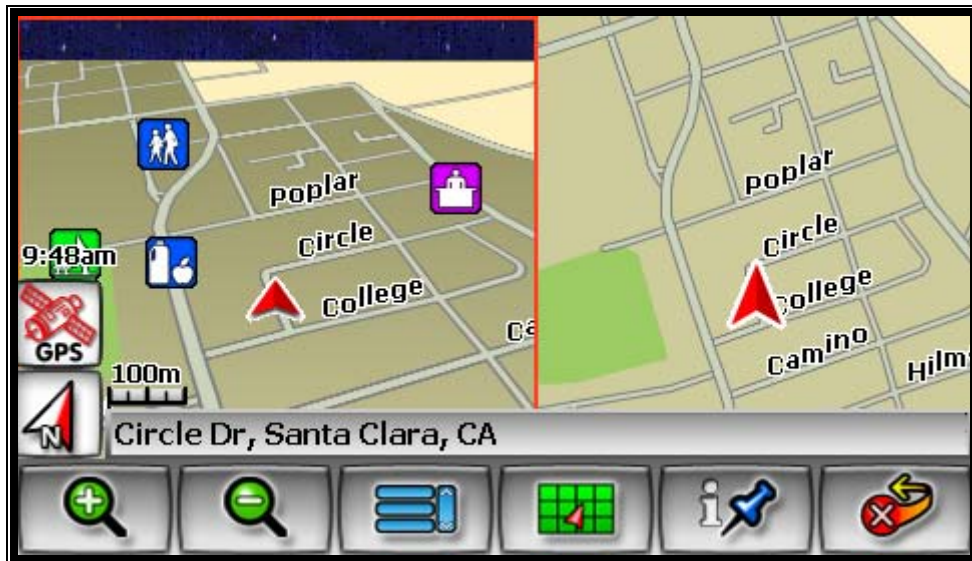


NavMate

Navigation Software Quick Start Guide

Version 1.1



Introduction to Your NavMate Software

NavMate software provides turn-by-turn visual and voice assistance to direct you to your selected destination. The software quickly calculates step-by-step directions to any destination available on the included navigation map.

The NavMate software uses Global Positioning System (GPS) satellites, and a digital roadway map database to calculate and display travel directions. The system's GPS antenna receives signals from a constellation of 24 satellites orbiting the earth and uses the strongest of signals, to determine your position to within meters.

Vehicle Position

The NavMate software's computer considers vehicle speed and heading changes, together with longitude and latitude information, to accurately determine vehicle heading and position on a digital map.

Signals from GPS satellites are used to determine the vehicle location. Three (good) or four (best) satellites must be received to accurately determine location. The GPS reception status is indicated by the GPS symbol on the map.

Map and Information Database

The map database used by your NavMate software was created using high-resolution aerial and land based data collection.

Car navigation maps are frequently updated. While the database was judged to be as accurate as possible at the time of its release, a map database can never be 100% accurate. Road information that is maintained in the map databases, such as turn restrictions or road names may change over time.

NavMate Software Operation

Quick Start

Follow these four easy steps and you are on your way.

Before operating your NavMate software, please carefully read and follow the instructions provided in the "Safety Information and Precautions" section of this manual.

Step 1 -- Start up/Main Menu

After the NavMate software starts, you will see the reminder warning to use your NavMate software safely and lawfully.

Warning Screen



Main Map Screen



Step 2 -- Select Destination

You have many ways to select a destination. For this example, let's find a nearby Airport.

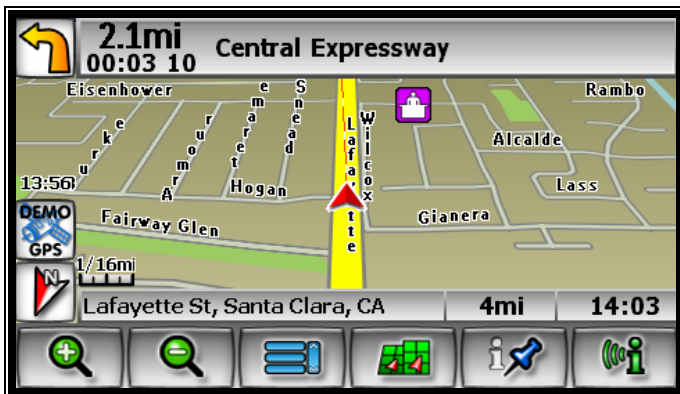
Select by touching screen:



- icon (F3) to activate main menu.
- **Start Route Guidance**
- **Point of Interest**
- **State/Province** **NOTE:** *The software remembers the last State/Province, so this step is not necessary every time.*
- **By Category**
- **Airport**
- **Sort by Distance**
- Select one of these and the system will calculate a route to that destination using the criteria set in the Setup menu.

Step 3 -- Map/Guide along Route

Proceed to the highlighted route and drive while the NavMate software provides audible and visual guidance to your destination.



Step 4 -- Arrive at Destination

That's it! You've arrived at the selected destination. Refer to the rest of this manual to become more familiar with the many options available on your NavMate software.

